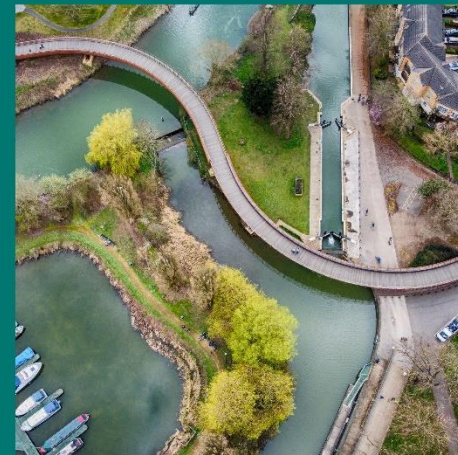


# ICP Outcomes Framework Metric Prioritisation

March 2023 Update



# Content

- The national “ask”
- The “ask” from the ICP in Northamptonshire
- Prioritisation process
- Prioritisation criteria
- Priority metrics identified by the ICB for 3 ‘LYBL’ ambitions
- Outputs from strategic leaders’ meeting
- Proposed priority metrics for the 7 remaining ‘LYBL’ ambitions
- Complete list priority metrics
- Areas for data development

- The Act requires integrated care partnerships to write an integrated care strategy to set out how the assessed needs (from the joint strategic needs assessment) can be met through the exercise of the functions of the integrated care board, partner local authorities or NHS England (NHSE).
- Guidance on the preparation of integrated care strategies published in July 2022 states that:

*Agreement by all actors within the integrated care system on priority outcomes, based on the needs identified in the joint strategic needs assessments, is a powerful way for the integrated care strategy to bring focus to the system, galvanising joint working and driving progress on the most important outcomes for the local population.*

*The Department of Health and Social Care will set out further detail on shared outcomes, as described in ‘Health and social care integration: joining up care for people, places and population’, by April 2023.*

# ICP December meeting discussion

- The ten ambitions are comprehensive, we need to prioritise metrics from the longlist to focus our (shorter term) delivery plans
- We should build on the nine priority metrics (across three ambition) identified as by the ICB as areas to focus on in their 5-year delivery plans, identifying priorities among the seven remaining ambitions
- The priority metrics need to be system-wide priorities and agreed by key partnership stakeholders recognising that Place(s) and Local Area Partnerships may identify additional localised priorities that speak to the system-wide ambitions.
- Metrics for this first iteration of the framework need to be currently available data that we can use to baseline, though we should not be restricted to this and need to explore new areas of data collection.
- The strategy development board (meeting Thursdays fortnightly) will continue to meet to oversee metric prioritisation to bring a suggested framework back to the ICP before its next meeting.

# Prioritisation Process

STRATEGY AMBITION	STRATEGY OUTCOME	Suggested Metrics (priorities identified by ICD)	Date of data	Ranking	Unit	Mark	Weight
Womens health and well-being and after pregnancy	Womens health and well-being and after pregnancy	% women who are in early pregnancy	2020/21	22	20%		
		% women smoking at time of delivery	2020/21	25	20%		
		Number of women receiving specialist postnatal mental health	2020/21	26	20%		
		% babies with low birth weight at time of birth (LBW)	2020	27	20%		
All children grow and develop so they are ready and equipped for school	All children grow and develop so they are ready and equipped for school	Number of children aged 5-16	2018	28	20%		
		% of children aged 5-16 with special educational needs	2020/21	29	20%		
		% of children aged 5-16 with special educational needs	2020/21	30	20%		
		% of children aged 5-16 with special educational needs	2020/21	31	20%		
Education settings are good and inclusive and children and young people, including those with special educational needs	Education settings are good and inclusive and children and young people, including those with special educational needs	% of people achieving 3-4 pass in Eng & Maths	2022	32	20%	63.83	
		% of people achieving 5 pass in Eng & Maths	2022	33	20%	48.7	
		Average attainment 8 scores of all pupils	2022	34	20%	44.7	
		% of people meeting the expected standard in reading, writing & maths	2022	35	20%	55%	
		% of SEND children achieving expected standard	2022	36	20%	53%	
		% of SEND children with special educational needs	2022	37	20%	53%	
		Rate of permanent exclusions (per 100 pupils)	2022	38	20%	0.06	
		Rate of permanent exclusions (per 100 pupils)	2022	39	20%	0.07	
		Number of children with SEND	2022	40	20%	1.17	
		Number of children with SEND	2022	41	20%	1.17	
		Number of children with SEND	2022	42	20%	1.17	
		Number of children with SEND	2022	43	20%	1.17	
Adults have access to learning opportunities which support them	Adults have access to learning opportunities which support them	% of adults aged 16-64 in Education, Employment or Training	2020/21	44	20%	52.3%	
		% of adults aged 16-64 in Education, Employment or Training	2020/21	45	20%	52.3%	
		% of adults aged 16-64 in Education, Employment or Training	2020/21	46	20%	52.3%	
		% of adults aged 16-64 in Education, Employment or Training	2020/21	47	20%	52.3%	
Children and adults are healthy and active and enjoy good mental health	Children and adults are healthy and active and enjoy good mental health	% of children who are obese	2020/21	48	20%		
		% of children who are obese	2020/21	49	20%		
		% of children who are obese	2020/21	50	20%		
		% of children who are obese	2020/21	51	20%		

Jan to Feb 2023

- Criteria and process agreed by strategy development board
- Supporting data circulated to inform prioritisation discussion

Process and criteria agreed

Strategic Leaders

- Workshop of strategic leaders focusing on ambition areas
- Polling software used to gather feedback on strategic priorities

- Meetings with analyst network (NHS, Police and Local Authorities)
- Reviewed strategic priorities and available datasets

Technical expertise

Final Proposal

- “Best Fit” metrics proposed for strategic priorities
- Data development recommendations where gaps in our data collection

# Prioritisation Criteria

## Metric Selection “Tests”

1. There is an identified need at a county level (Northants benchmarks poorly compared with its peers)
2. Both North and West of the county recognise a need (this is not a specific need in one “Place”)
3. This will have an “upstream” impact and help shift the population curve
4. This will have a significant impact on reducing health inequalities
5. There will be real value added from the Partnership working together on this
6. This is an issue amenable to local action

live your best life

# ICB Priority Metrics

Ambition	Available System Priority Metrics
Best Start in Life	% achieving good level of development at age 2-3
Opportunity to be fit, well and independent	% Adults current smokers (APS)
	% Adults classified as overweight or obese
	Adolescent self-reported wellbeing (SHEU)
	Standardised rate of emergency admissions due to COPD
Access to health and social care when they need it	% Cancer diagnosed at stage 1/2
	% of people discharged from hospital to their usual place of residence
	Rate of ED attendances for falls in those aged 65+
	% Eligible LAC and adults with LD/SMI receive annual health check

# Strategic Leaders' Thoughts





live your best life

# Priorities for Remaining Ambitions

Integrated Care  
Northamptonshire



Ambition	Outcomes	Available System Priority Metrics
Access to the best available education and learning	<ul style="list-style-type: none"> <li>Education settings are good and inclusive and children and young people, including those with special needs perform well</li> <li>Adults have access to learning opportunities which support them with work and life skills</li> </ul>	Gap in Attainment Level 8 for FSM and LAC ?SEND pupils ( <b>reduction = improvement</b> )
Employment that keeps them and their families out of poverty	<ul style="list-style-type: none"> <li>More adults are employed and receive a 'living wage'</li> <li>Adults and families take up benefits they are entitled to</li> </ul>	Gap in employment for those in touch with 2ary MH services ( <b>reduction = improvement</b> )
Housing that is affordable, safe and sustainable in places which are clean and green	<ul style="list-style-type: none"> <li>Good access to affordable, safe, quality, accommodation and security of tenure</li> <li>The local environment is clean and green with lower carbon emissions</li> </ul>	Number of households owed a duty under HRA (to prevent loss of tenancy) ( <b>reduction = improvement</b> )
To feel safe in their homes and when out and about	<ul style="list-style-type: none"> <li>People are safe in their homes, on public transport and in public places</li> <li>Children and young people are safe and protected from harm</li> </ul>	Number of re-referrals to MARAC for children experiencing domestic abuse ( <b>reduction = improvement</b> )
Connected to their families and friends	<ul style="list-style-type: none"> <li>People feel well connected to family, friends and their community</li> <li>Connections are helped by public transport and technology</li> </ul>	% Adult social care users who have as much social contact as they would like ( <b>increase = improvement</b> )
The chance for a fresh start, when things go wrong	<ul style="list-style-type: none"> <li>Ex-offenders and homeless people are helped back into society</li> <li>People have good access to support for addictive behaviour and take it up</li> </ul>	Number of emergency hospital admissions for those of no fixed abode ( <b>reduction = improvement</b> )

Ambition	Priority Theme Identified by Strategic Leaders	Data Development Suggestions
Access to the best available education and learning	All can reach their potential and good mental wellbeing for CYP	Need to better explore wellbeing in school aged children Need to better measure quality of education and outcomes for SEND pupils
Employment that keeps them and their families out of poverty	Gap in employment for those with mental health need	None – adequate metric available
Housing that is affordable, safe and sustainable in places which are clean and green	Access to affordable and quality homes	Need to explore available data on quality of homes and exposure to cold/damp/mould conditions
To feel safe in their homes and when out and about	Adverse Childhood Experiences – improving outcomes for those experiencing ACEs	Need to look at data linkages with NARP/Police observatory to track outcomes for CYP experiencing ACEs
Connected to their families and friends	Improving outcomes for those who are socially excluded	Need to look at data collection for socially excluded groups and opportunity for data linkages to start tracking outcomes (CORE20PLUS5 link)
The chance for a fresh start, when things go wrong	Improving outcomes for those experiencing multiple exclusion homelessness	As above, need to explore more connected data systems to understand outcomes for people with experience of rough sleeping/criminal justice

live your best life

# Complete List Priority Metrics

Integrated Care  
Northamptonshire



Ambition	Available System Priority Metrics
Best Start in Life	% achieving good level of development at age 2-3
Access to the best available education and learning	Gap in Attainment Level 8 for FSM and LAC pupils
Opportunity to be fit, well and independent	% Adults current smokers (APS) % Adults classified as overweight or obese Adolescent self-reported wellbeing (SHEU) Standardised rate of emergency admissions due to COPD
Employment that keeps them and their families out of poverty	Gap in employment for those in touch with 2ary MH services
Housing that is affordable, safe and sustainable in places which are clean and green	Number of households owed a prevention duty under Homelessness Reduction Act
To feel safe in their homes and when out and about	Number of re-referrals to MARAC for children experiencing domestic abuse
Connected to their families and friends	% Adult social care users who have as much social contact as they would like
The chance for a fresh start, when things go wrong	Number of emergency hospital admissions for those of no fixed abode
Access to health and social care when they need it	% Cancer diagnosed at stage1/2 % of people discharged from hospital to their usual place of residence Rate of ED attendances for falls in those aged 65+ % Eligible LAC and adults with LD/SMI receive annual health check